

NEW PRODUCTS AND EQUIPMENT

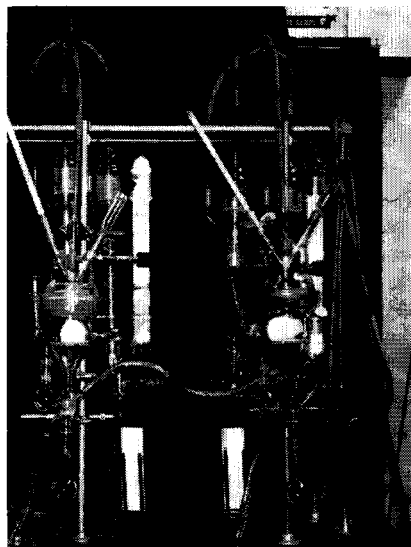
More Powerful Permanent Plate Magnets

A more powerful, redesigned line of nonelectric Alnico magnets for removing tramp, iron from powdered, granular, fibrous or viscous, material flows is now available from the Dings Magnetic Separator Co.

Larger Alnico blocks on these Perma-Plate magnets have increased their strength by as much as 50%. The magnets are available in three basic strengths and a complete range of magnetic widths. The Perma-Plate line includes self-cleaning models and magnetic humps. The magnetic strength of all these units is guaranteed for their mechanical life. **PE1**

Metabolism Cages For Tracer Studies

Two of the glass metabolism cages available from Wakefield Industries, Inc., for use in metabolic studies of radioactive labeled compounds. The cages are made in two sizes, the



smaller unit is for mice and the larger for rats. The cages have facilities for collecting urine and expired air from rats within the units. Other designs and sizes can be built to desired specifications. **PE2**

Timer for Automatic Industrial And Laboratory Processes

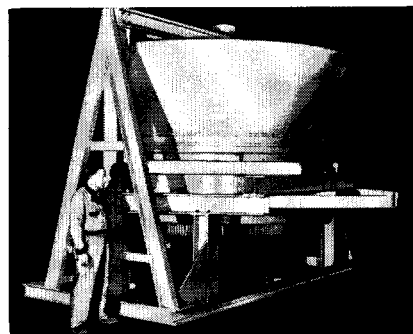
An industrial timer for industrial and laboratory services that require timed intervals, timed delay periods, or other programming is available from the G. C. Wilson Co. The timing cycle can be initiated by a push button or any sus-

tained contact closing device. The time interval from 0.1 to 60 seconds can be set by a control device and the timing intervals are unaffected by variations in the line voltage.

The unit can be operated from any 120 volt line and consumes 8 watts. Typical applications recommended by the manufacturer include: bag filling, bottle filling, and industrial washing machines. **PE3**

Bin Feeder

A bin feeder which will take intermittent charges of bulk chemicals like phosphate fertilizer and discharge the material at a uniform rate onto a belt conveyor is manufactured by the Pulva Corp., Perth Amboy, N. J.



The entire bin and discharge table revolve. As the cylinder and plate rotate, the plow continuously removes a stream of material from the bottom of the mass of the cylinder, discharging it off the top of the plate. Discharge rate can be varied by altering the thickness of the plow and the speed at which the feeder turns. **PE4**

Compound Retards Sprouting Of Harvested Potatoes

Sterwin Chemicals, Inc., is offering a compound which will inhibit stored potatoes from sprouting for up to six months. The material called Fusarex was tested last winter by a group of farmers, according to P. Val Kolb, president of Sterwin; the test campaign was fully successful. The compound was applied as a dry powder to the harvested potatoes which were then placed in storage bins. At the conclusion of the storage period, six months later, the potatoes were found relatively free of sprouts and showed no loss of weight or shriveling, according to Mr. Kolb.

The material can be applied at any time while the potatoes are in a dormant

state, from two weeks to three months after digging, depending upon the storage temperature.

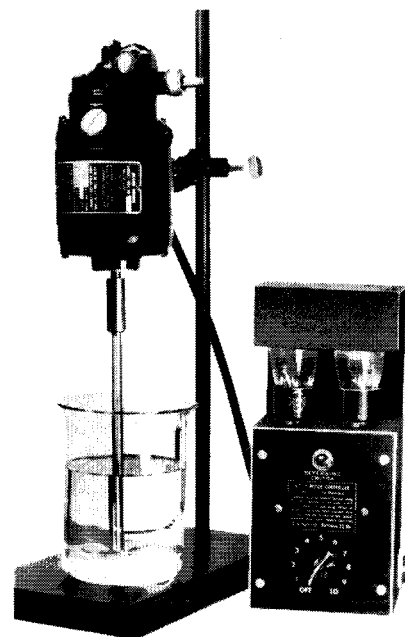
The company is marketing the compound through distributors located in the nation's potato growing regions. **PE5**

Fire Retardant Paint Available

The National Fire Retardant Corp. has developed an interior flat wall washable oil paint which retards the spread of flame on its surface. The manufacturer claims that when exposed to flame the paint releases carbon dioxide and calcium chloride which will smother flame on the surface. The paint has been approved by the Underwriters Laboratories and also passes federal specifications. **PE6**

Electronically Controlled Laboratory Mixer

The Heller GT-21 mixer provides the advantages of controlled speed in D.C. motors operating from A.C. outlets. The motor is an enclosed ball bearing unit with extended armature and gear shaft. Both ends of the shaft are usable with chuck mixing shafts or a three step pulley. The manufacturer claims that motor torque



is constant over the entire speed range. An increase in power requirement is automatically signaled to the control unit, which supplies D.C. power in stepless variation to the motor. **PE7**

Use coupon, page 855, for further information